

# BS-8 Series 8" Shallow base

## Applications

The shallow base is designed to mount an 8" inset light into a taxiway or runway pavement location.



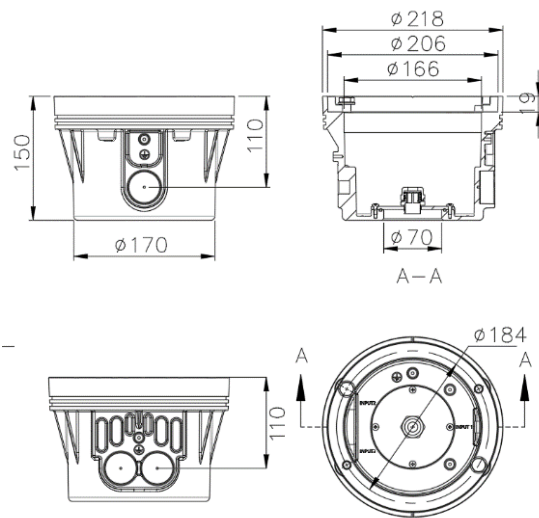
## Compliance with standards

- FAA: AC 150/5345-46
- FAA: AC 150/5345-42
- IEC TS 61827

## Features

- Corrosion proof cast aluminum alloy
- Anodized surface treatment
- Optional side entry and bottom entry
- Optional one or two side entries for the cable
- M10 stainless steel bolts and lock washers
- Earth point provided

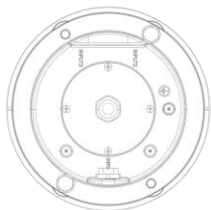
## Outline drawing (mm)



## Mechanical

- Static Load: > 25 t
- Net weight: 2.5 kg
- Gross Weight: 2.8kg

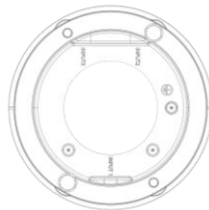
## Ordering information



BS-8F (1 Input)

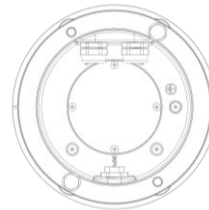
Bottom entry, 70mm O.D. hole with sealed cover, equipped a M20 cable gland. One side entry, equipped a M20 thread plug.

\*Bottom entry shall be transformed to side entry by exchanging the cable gland with the thread plug, and vice versa.



BS-8G

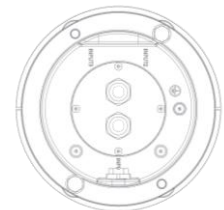
Bottom entry,  $\phi 100$  mm hole.



BS-8H (2 Inputs)

Side entries, equipped with two M20 cable glands and a thread plug.

\*The default configuration is one side 2 inputs entry, it can be transformed to two side entry by exchanging the cable gland with the thread plug, and vice versa.



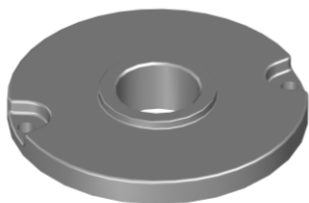
BS-8K (2 Inputs)

Bottom entry, equipped with two M20 cable glands and a thread plug.

# Accessories of 8" Shallow base

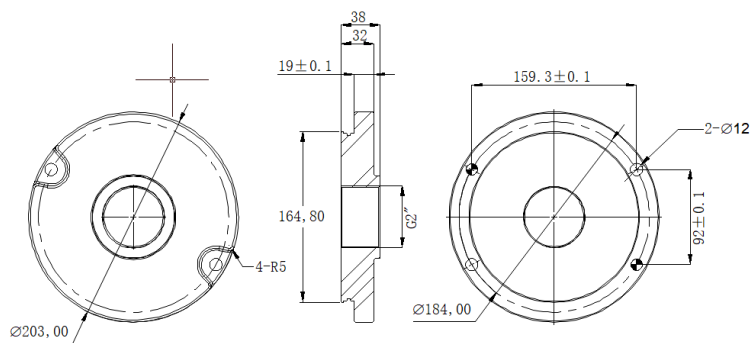
## Cover Plate

### ■ CP-08A

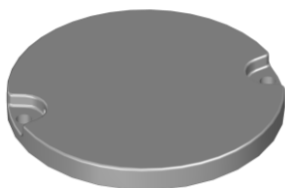


Manufacturing Method: Machine made  
Material: Corrosion proof aluminum alloy  
Finish: Anodic oxidation or yellow UV resistant coating  
Thread: 2 inches female thread

#### DIMENSIONS (mm)



### ■ CP-08B



Manufacturing Method: Machine made  
Material: Corrosion proof aluminum alloy  
Finish: Anodic oxidation

#### DIMENSIONS (mm)

